

>Sequence

taaacagacgttctgaattttgtgaaatgtatgccagcaaacgctcgccagcgggaacttcaaaaagggttacggggtccgcgaa
gcagtttgactaacaccaatccgtcgaaacgggcacagagaacgattaaatggagaacttgagacgggttgctatgcttcttc
cttacgacagctctaccatcagccgtctggataaaactctccgtgctccgacttgagctcagctttcttcaatgcaaagct
cactttcaagcatgtctacacaaactctcagttccgtgctcagctgggtttccaatgtcaactcattcgattcttatcaacc
acacccctcctataccatttttcaaacaaaagttccaacaatctttgatctacgaatttggaacaccaatggttggaacccagaag
aatccaattttgaagaaattagttctgaaatcactttgggtggattttattcttctgtttctcaatgacaatggagaaatctattat
gcattctgaaaaacgttagaaaaatttttgggatttccatcaactctgatgtttctacatcaaccagtttatgatctttatacattc
ggaagatcgtgatgatattcgtcaacaactttgatttcgaactttcatattccaacgctcatctgcctcaaatacaatttgatg
tttttgaccacaaaaactcaaaaatatctggaaacgtaattgtgaacgcaagattttcggtgcttattggataacacatgtgga
tttttgagaattgacatgacgggaaaagttgatgtctctacattggattaccatcatcgtatgtaattgggaagaactgcctc
gggtccagttgctcggaatgatttgcgttttgacacaccttttgcgcgccttcaacatccgatttagcatccggaagacatga
ttttgaaaaacaaaacatcagttggatggagcttttagtatctatggatcaaaaagggtttatgaaatgtagaaattgatgaa
aatcttagtccacgtggaagatgcagttctgcattgggtgaaagctcataaagaagctat
gggtatatogtctagtcagcacaacaaaactcgtcgtacgtattttgttcaaaagctcct
aacccggaatcaattggcttaactcacagattactcaacgaagtgggaaggtacaatg
aaagctaaaactattatcatttgacgattcattttcttcaatctccacgaaatctcca
tatcttatctgaaaacatgacgaagatttttccaaacccatcaacatccaatccctat
ccacatccacaaaatgagccattttcacccgaatatccgaccccttcaacacaccaaga
ttttcatcatcaccatttaaaaacagacaattttcattttaatctctgaagtaaccaatcttctagggcacgtgaattgtag



Caenorhabditis elegans ("C.elegans")

Friends

About

Hello! I am a *Caenorhabditis elegans*. You can call me "C. elegans", pronounced "see el eh gans". I am a model organism used to research mechanisms and consequences of mitochondrial toxicity at Duke University.

FAQs

- Why are you such a great model?
 - Sequenced genome
 - Complete cell lineage map
 - [Transparent development](#)
 - [Simple neural system which has been mapped](#)
 - Short lifecycle
 - Large number of offspring
 - Inexpensive to maintain in lab
 - Lots of mutants, transgenics, and gene knockdown tools!
- What types of studies are you used for?
 - Neurological studies
 - Toxicological studies
 - Developmental biology
 - Genetic studies

Living



Durham, North Carolina

Current City

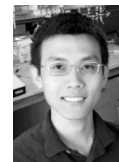
Basic Information

Gender	Hermaphrodite
Birthday	August 5
Favorite Habitat	Organic matter-rich environments that have lots of yummy microbes
Body Size	1 mm
Favorite Food	<i>E. coli</i> Bacteria
Phylum	Nematoda

Top Three Friends



Joel Meyer

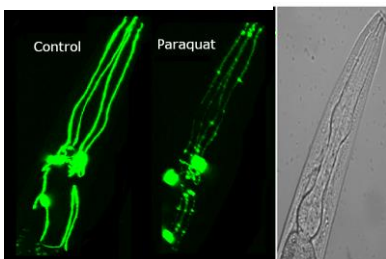


Alex Ji

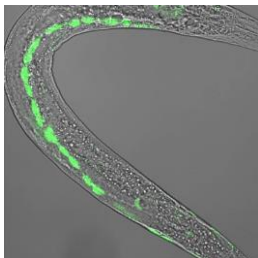


Claudia Gonzalez

C.elegans Selfies



Left: Intact and damaged dopaminergic neurons in the head region of the *C.elegans*. (Photo by Claudia Gonzalez and Maxwell Leung)



Right: Autophagy visualized in seam cells using green fluorescent protein (Photo by Amanda Bess)

Achievements

- [First nematode to perform the Harlem Shake](#)
- 2002 [Nobel Prize winners in Physiology/Medicine](#) used me to discover the genetic regulation of organ development and programmed cell death

Contact Information

Email

Nematode_ya_so_11@facebook.com